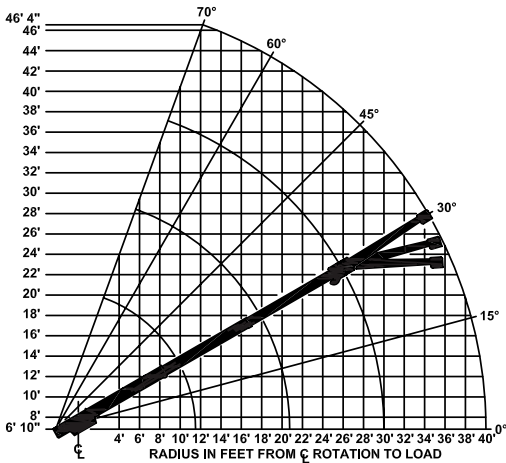


# BMC<sup>®</sup> BRODERSON<sup>®</sup> Manufacturing Corp.

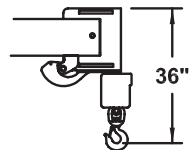
## Load Chart US Standard

# IC-80-3L Industrial Crane

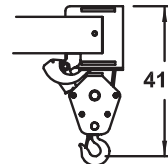


CAPACITIES APPLY TO OPERATION ON FIRM LEVEL SURFACE						
LOAD RADIUS FEET	MAIN BOOM OR EXTENSION CAPACITIES IN POUNDS					
	360° ROTATION		OVER FRONT			
	ON RUBBER	ON OUTRIGGERS	ON RUBBER	ON OUTRIGGERS		
MAIN BOOM	5	9400	17000	11400	18000	
	6	7550	14000	10000	14000	
	8	5600	10000	8100	10000	
	10	4300	7700	6100	7700	
	12	3200	6100	4450	6100	
	14	2550	5200	3400	5200	
	16	2050	4400	2700	4400	
	18	1650	3900	2200	3900	
	20	1350	3400	1800	3400	
	22	1150	3050	1550	3050	
	24	1000	2750	1350	2800	
	26	850	2450	1200	2550	
	28	750	2200	1100	2350	
	30	650	1950	1000	2150	
10' BOOM EXT.	32	450	1750	900	1950	
	34	350	1600	800	1800	
	36	250	1450	700	1650	
	38	200	1300	600	1500	
	40	150	1150	500	1400	
	BOOM EXTENSION	10-FOOT BOOM EXTENSION - STRAIGHT OR OFFSET				
	ANGLE	MAIN BOOM ANGLE				
		0°	30°	45°	60°	70°
	*† 0°	2250	2600	3200	5000	7000
	† 15°	---	2400	2700	3500	4200
† 30°	---	2250	2500	3000	3300	

+ USE 0° FOR STRAIGHT BOOM EXTENSION † USE 0°, 15° or 30° FOR OFFSET BOOM EXTENSION



USE SINGLE PART LOAD LINE FOR LOADS TO 9000 LBS. (WT. 90 LBS.)



USE TWO PART LOADLINE FOR LOADS TO 18000 LBS. (WT. 124 LBS.)

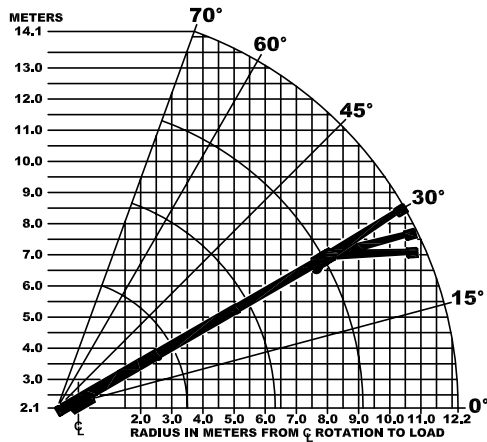
LOAD RADIUS IS THE HORIZONTAL DISTANCE FROM THE CENTER OF ROTATION OF THE UNLOADED CRANE TO THE VERTICAL LOAD LINE WITH THE LOAD APPLIED.

EXCEEDING CAPACITY RATINGS OR APPLYING SIDE LOADS TO THE BOOM OR BOOM EXTENSION IS MISUSE, HAZARDOUS, AND VOIDS WARRANTY.

**CAUTION:** BOOM EXTENSION LOADS MUST NOT EXCEED MAIN BOOM CAPACITY. BOOM EXTENSIONS CAN BE USED ON RUBBER WHEN CRANE IS STATIONARY. DO NOT PICK AND CARRY WITH BOOM EXTENSION DEPLOYED.

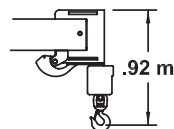
CAPACITIES ON OUTRIGGERS ARE 85% OF TIPPING LOADS. CAPCITIES ON RUBBER ARE 75% OF TIPPING LOADS. CAPACITIES ON IN & DOWN OUTRIGGERS ARE LESS THAN 85% OF TIPPING LOADS. CAPACITIES BELOW BOLD LINE ARE LIMITED BY TIPPING. OTHER CAPACITIES ARE LIMITED BY STRUCTURAL OR HYDRAULIC CAPABILITY.

## Load Chart Metric

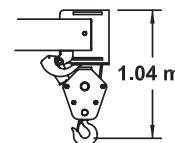


CAPACITIES APPLY TO OPERATION ON FIRM LEVEL SURFACE						
LOAD RADIUS METERS	MAIN BOOM OR EXTENSION CAPACITIES IN KILOGRAMS					
	360° ROTATION		OVER FRONT			
	ON RUBBER	ON OUTRIGGERS	ON RUBBER	ON OUTRIGGERS		
<b>MAIN BOOM</b>	1.5	4260	7710	5170	8160	
	2.0	3140	5790	4290	5790	
	2.5	2470	4400	3580	4400	
	3.0	1990	3560	2830	3560	
	3.5	1560	2910	2180	2910	
	4.0	1270	2520	1720	2520	
	4.5	1060	2210	1400	2210	
	5.0	890	1950	1170	1950	
	5.5	740	1760	990	1760	
	6.0	630	1570	840	1570	
	6.5	540	1430	730	1430	
	7.0	480	1320	650	1330	
	7.5	430	1200	580	1230	
	8.0	380	1090	530	1140	
	8.5	340	1000	500	1070	
<b>3 m BOOM EXT.</b>	9.0	290	910	460	990	
	10.0	180	760	390	850	
	11.0	110	650	310	740	
	12.2	60	520	220	630	
	<b>3 METER BOOM EXTENSION - STRAIGHT OR OFFSET</b>					
<b>BOOM EXTENSION</b>	<b>MAIN BOOM ANGLE</b>					
	ANGLE	0°	30°	45°	60°	70°
	*† 0°	1020	1180	1450	2260	3170
	† 15°	---	1090	1220	1580	1900
	† 30°	---	1020	1130	1360	1490

+ USE 0° FOR STRAIGHT BOOM EXTENSION † USE 0°, 15° or 30° FOR OFFSET BOOM EXTENSION



USE SINGLE-PART LOAD LINE FOR LOADS TO 4080 kg (WT. 40 kg)



USE TWO-PART LOAD LINE FOR LOADS TO 8160 kg (WT. 56 kg)

LOAD RADIUS IS THE HORIZONTAL DISTANCE FROM THE CENTER OF ROTATION OF THE UNLOADED CRANE TO THE VERTICAL LOAD LINE WITH THE LOAD APPLIED.

EXCEEDING CAPACITY RATINGS OR APPLYING SIDE LOADS TO THE BOOM OR BOOM EXTENSION IS MISUSE, HAZARDOUS, AND VOIDS WARRANTY.

**CAUTION:** BOOM EXTENSION LOADS MUST NOT EXCEED MAIN BOOM CAPACITY. BOOM EXTENSIONS CAN BE USED ON RUBBER WHEN CRANE IS STATIONARY. DO NOT PICK AND CARRY WITH BOOM EXTENSION DEPLOYED.

CAPACITIES ON OUTRIGGERS ARE 85% OF TIPPING LOADS. CAPACITIES ON RUBBER ARE 75% OF TIPPING LOADS. CAPACITIES ON IN & DOWN OUTRIGGERS ARE LESS THAN 85% OF TIPPING LOADS. CAPACITIES BELOW BOLD LINE ARE LIMITED BY TIPPING. OTHER CAPACITIES ARE LIMITED BY STRUCTURAL OR HYDRAULIC CAPABILITY.